



# Operation Manual

## Agile Config 2.0



# CONTENTS

Chapter 1. Introduction .....	1
Chapter 2. Preparing for configuration .....	2
2.1 Equipment Required .....	2
2.2 Installing Agile Suite.....	2
Chapter 3. Generating configuration files.....	4
3.1 General Config.....	4
3.2 Specific Config .....	5
3.3 Logo Config and Favicon Config .....	7
Chapter 4. Upgrading the devices .....	8
4.1 Topology .....	8
4.2 Upgrading process.....	8
Chapter 5. FAQ .....	10

# Chapter 1. Introduction

Agile Config is a function that simplifies the Service Provider customization process, it can be used to customize the default settings of devices one at a time or in batches. Flexible settings include adding a logo, WAN connection type, SSID, password, time zone, language etc.

Agile Config includes four function——General Config, Specific Config, Logo Config and Favicon Config. General Config is used to upgrade the common configuration of devices with same HW&SW version to the defaults required by the Service Provider. Specific Config is used to set specific configurations for each device according to its MAC address. Logo Config and Favicon Config are used to change the ISP logo and Favicon that you want to be displayed.

Once the config process is completed, the settings will become the “new defaults”. Even the device is reset to defaults or the reset button is activated, device will return to the settings configured by Agile configuration tool, rather than factory default setting. This allows the Service Provider to create a custom product quickly and save the settings permanently in the device.

This document will teach you how to setup and use the Agile Config tool. Please be noted Agile Config tool only support below models that TP-Link launched for Service Providers. If you have any questions on this process, please contact **isp.us@tp-link.com**.

Model	Version	Description
Archer C5	4.0	AC1200 Wireless Dual Band Gigabit Router
EC330-G5u	1.0	AC1900 Wireless Dual Band Gigabit Router
HC220-G1	1.0	AC1300 Mesh wifi system

## Chapter 2. Preparing for configuration

Before all the configuration work begins, you need to prepare the equipment and install “Agile Suite” software.

### 2.1 Equipment Required

- Hardware required: one PC, one switch (optional for batch configuration) and TP-Link managed router(s) which supports Agile Config feature.
- Supported operating systems: Windows 7/ Windows 10 (NET Framework 3.5 or later needed).
- Software required: Excel 2007 or later; Agile Config 2.0 Software Suite.

### 2.2 Installing Agile Suite

You will receive Agile suite which contains the two files listed below:

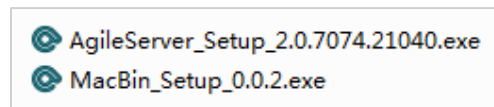


Figure 2-1

🔑 **Note:** The password is “Tplinkonly1”.

(1) Install **AgileServer\_setup.exe** which will load the **AgileServer** software

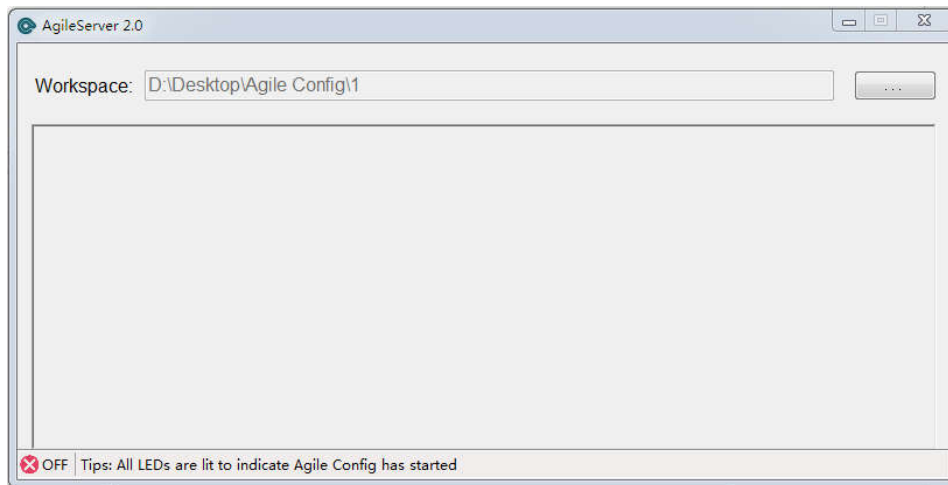


Figure 2-2

(2) Install **MacBin\_Setup\_0.0.2** which will install the **MacBin** tool.

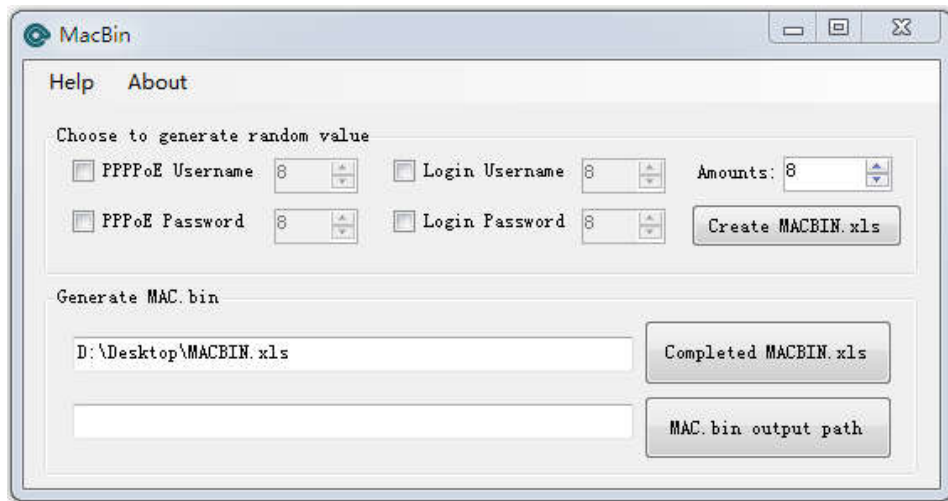


Figure 2-3

## Chapter 3. Generating configuration files

### 3.1 General Config

General Config is available to update multiple devices of the same model and software version. To begin the General Config process, you will need a sample of the router model and software you want to configure. This sample will be referenced as prototype below

(1) Plug the PC to the LAN port of the standard prototype via an Ethernet cable, and login into the web management page.

**Note:**

- a) The IP address of your PC should be obtained automatically.
  - b) Please find the login information from the label on the bottom of the standard prototype.
- (2) Set the configuration items you would like to be loaded and become the new default settings. All configurable options can be modified and saved for your configuration. Please see FAQ section at the end of this document on steps needed to configure Wi-Fi settings to be unique per each router configured.

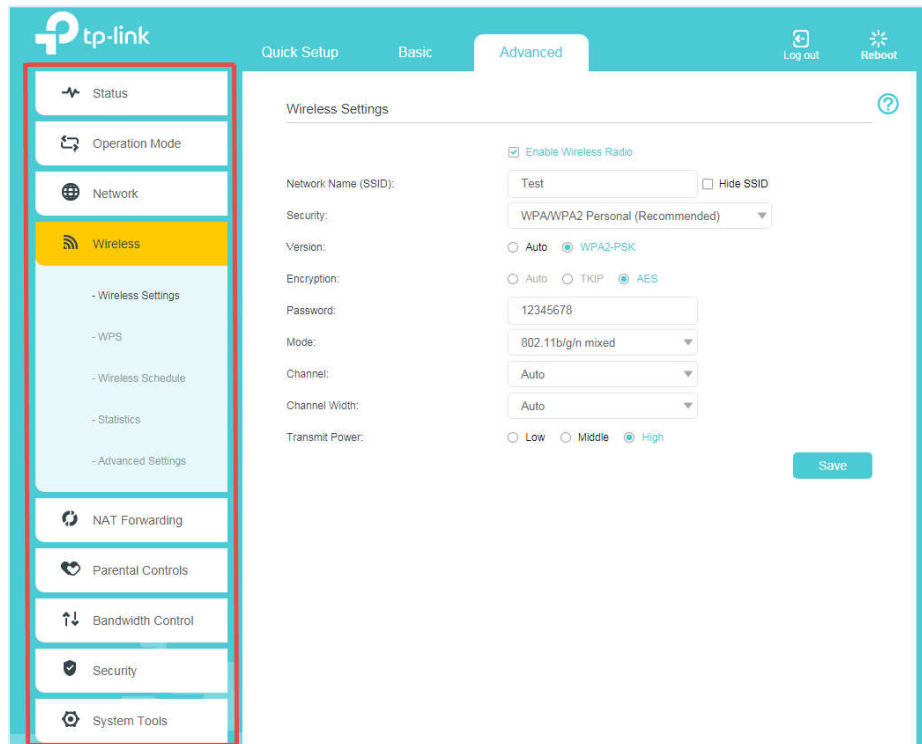


Figure 3-1

(3) Once you have completed configuring the default settings navigate to the advanced tab / System Tools / Backup and Restore and select “**Backup**”. The configuration file will be downloaded by the browser, and you can find it in the download folder used by your browser.

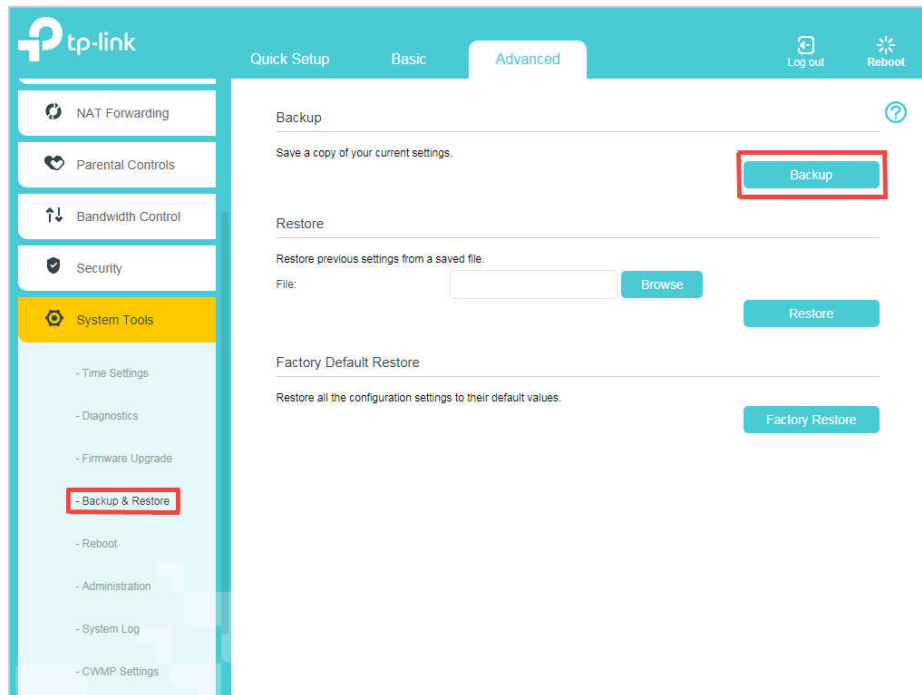


Figure 3-2

**Note:**

- a) The exported configuration file is one “xxxxx.bin” file based on model name, usually it is named as “**model+version.bin**”.
- b) If the backup file is “conf.bin”, that means your device does not support Agile config function and will not work.
- c) This file name cannot be modified. If the file name is changed the tool will not be able to locate it and procedure will fail.

## 3.2 Specific Config

Specific Config only supports changing specific parameters, including Network Name (SSID) and Wireless password, the username and password of Web management interface, username and password of PPPoE connection, IP address, subnet mask and gateway address of static IP connection.

Example: A Service Provider purchases 100 pcs of TP-Link managed routers that support Agile Config and use PPPoE as their connection type. Each device will have a different PPPoE username and password, this can be accomplished by using the MAC Bin tool in conjunction with the Agile Config tool.

- (1) Run **MacBin** as administrator.

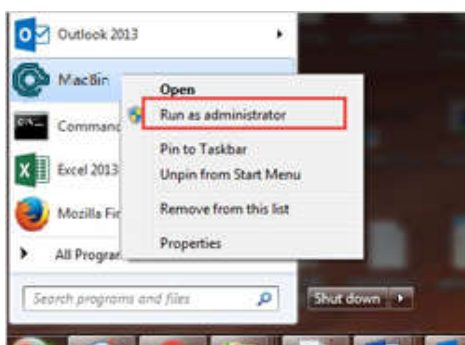


Figure 3-3

(2) If you want to obtain random parameters by the tool, click and select the parameters you want. Otherwise, do not select anything and click “**Create MACBIN.xls**”.

We assume that the username and password of PPPoE is composed of 8 bits random characters. Select them and enter a digit such as 8, input the total number of configuration files such as 100. Click “**Create MACBIN.xls**”.

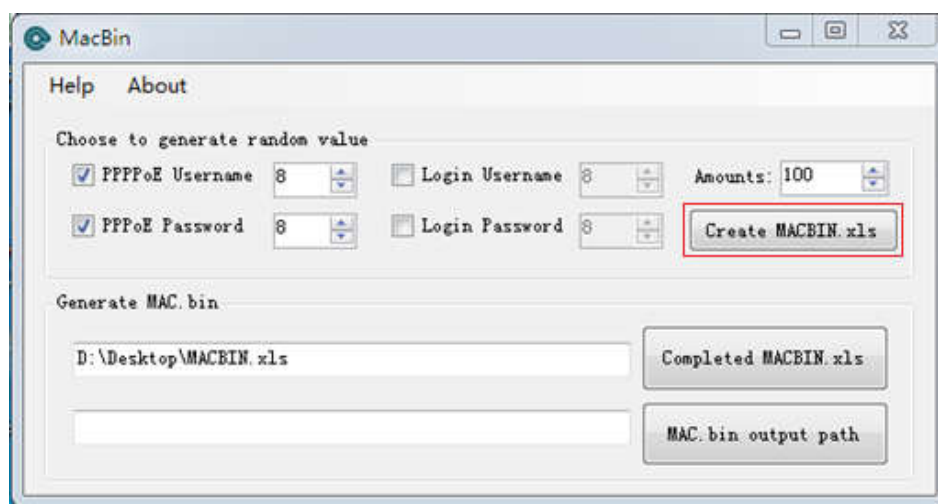


Figure 3-4

(3) Open the relevant MACBIN.xls and input the MAC addresses of the 100 routers you need to configure. You can find the columns of PPPoE Username and Password was auto completed with random values. Save the file after completion.

MAC Address	Username	Password	WirelessKey	PPPoE Username	PPPoE Password
7C8BCA5718DC				IC1i1vbSXU	bJATK7
7C8BCA5719DC				JaTHXcytXe	SgixcW
7C8BCA5720DC				meXJRgdp9J	H5oOLF
7C8BCA5721DC				hpfPUXGL2k	isVD1C
7C8BCA5722DC				r2D7YUE1az	42rT0s
7C8BCA5723DC				3fGgJd0H2a	VT0YsM
				82AkSvSYpL	3rQ3b2
				tUSf3ntss2	9ROpCE

Figure 3-5

**Note:** You can request the list of MAC address from your distributor

(4) Click the “**Completed MACBIN.xls**” button and select the excel file you just saved, then

click and select “**MAC.bin output path**”, the “MAC.bin” file will be automatically produced in the folder you have choose.

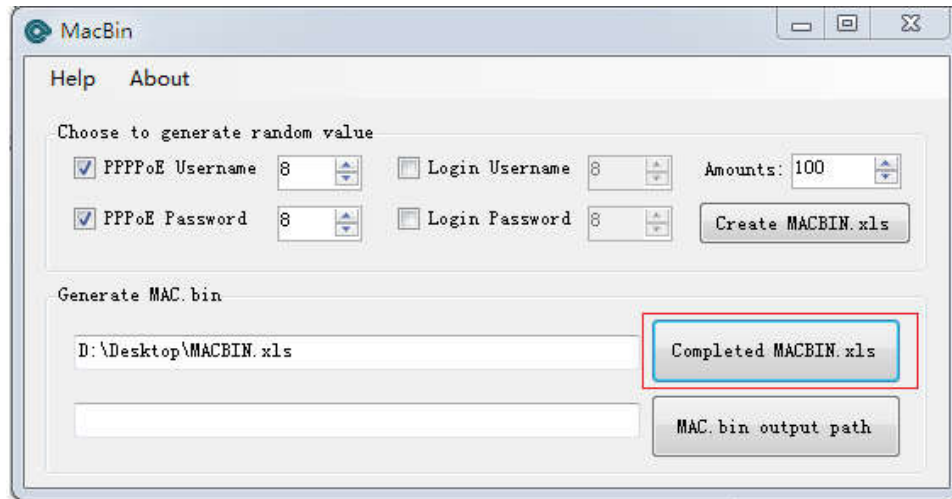


Figure 3-6

**Note:**

- a) The exported configuration file is one “xxxxx.bin” file based on MAC address, such as “7C8BCA5718DC.bin”.
- b) For PPPoE and Static IP, need to build up one PPPoE or Static IP connection in general config mode first, then can set PPPoE account and static IP parameters in specific config mode.

### 3.3 Logo Config and Favicon Config

You can add your ISP logo and Favicon by Logo Config and Favicon Config in the Agile Config tool.

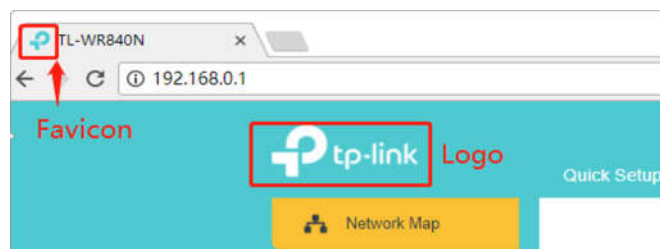


Figure 3-7

Prepare the Favicon and Logo file you want to add. The Logo file must be named as logo-icon.png and the Favicon file must be named as favicon.ico.

**Note:**

- a) The Favicon and Logo file cannot exceed 6KB.
- b) The size of the Logo image cannot exceed 130\*50, a warning will appear if the width exceeds 135 or the length exceeds 55 (The image will still be replaced).

# Chapter 4. Upgrading the devices

## 4.1 Topology

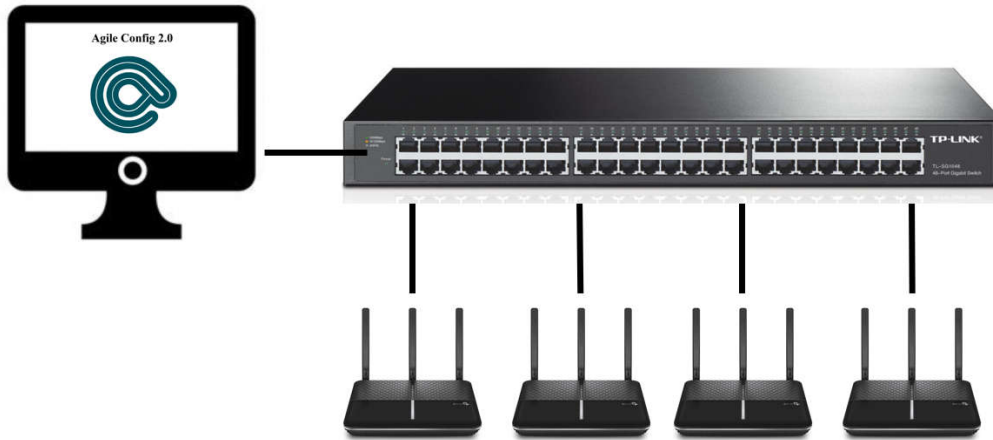


Figure 4-1

☞ **Note:** Connect the PC to the switch first, then connect the WAN port of the router to the switch, the device will be upgraded automatically once the process is started.

## 4.2 Upgrading process

(1) IP Address setting on PC

Set the IP address and subnet mask as “192.168.66.10, 255.255.255.0” and Default Gateway to 192.168.66.1 and click **Save**.

(2) Create a folder and place all files in this folder. You can have total four files: general config file, MAC.bin file (optional), Favicon.ico file (optional) and logo-icon.png (optional).

(3) Launch the Agile Config tool and select the folder created in step 2 where the configuration files are located.

☞ **Note:** The Agile Config tool should be started only after the IP address is set to the values above. If you forget this step and get an error, make sure IP address is correct and close and reopen the Agile Config application

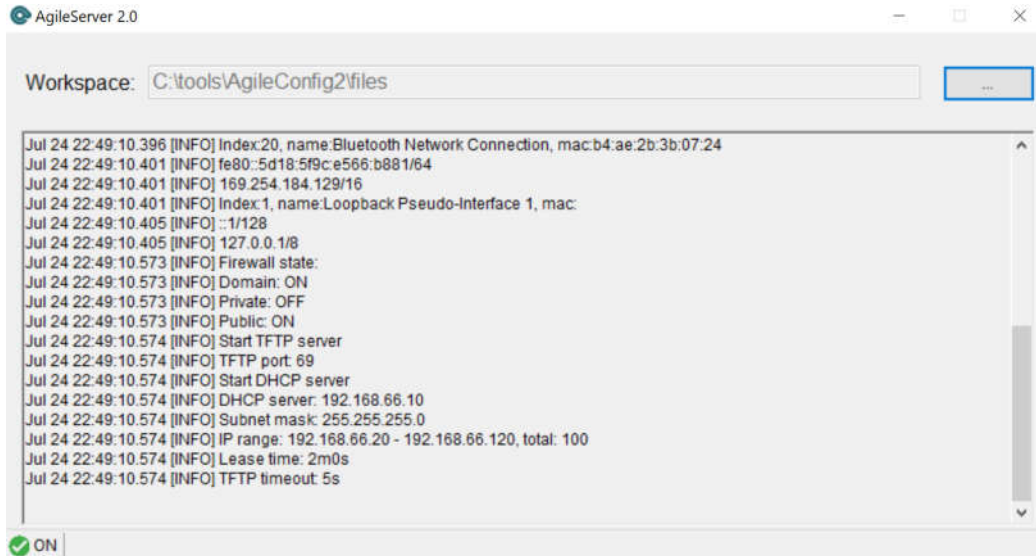


Figure 4-2

(4) Connect the WAN port of the device to the switch, power the device on, the device will be upgraded automatically.

**Note:**

All LEDs are lit to indicate the Agile Config has started.

All LEDs flashes indicate the Agile Config is successful.

(5) As long as the software is running, you can configure many units quickly by removing devices that have completed the process and connecting the next device. You can configure many units at once and then repeat the process.

## Chapter 5. FAQ

### **1. How do you configure the device's SSID to be formatted with MAC address?**

If the SSID of each device needs to be unique based on their MAC addresses, please set the SSID as “ISP\_XXXX\_2G” in General Config. Here, XXXX will be replaced with the last N bits of the MAC address (N is the number of Xs you enter). For example, when the MAC address is 8D6C7298D0A and the SSID is set as ISP\_XXXX\_2G, the new SSID will be ISP\_8D0A\_2G. If the SSID is WISP\_XXXXXX, it will be WISP\_298D0A.

### **2. How to configure the Wireless password of each device to be unique?**

Please set the wireless password to be “?undefined?” in General Config, the password of each device will be the same as its PIN after set by Agile Config.

### **3. Need to Contact TP-Link USA ISP Sales and support?**

If you have any question or need help with your configuration, please contact us at [isp.us@tp-link.com](mailto:isp.us@tp-link.com).